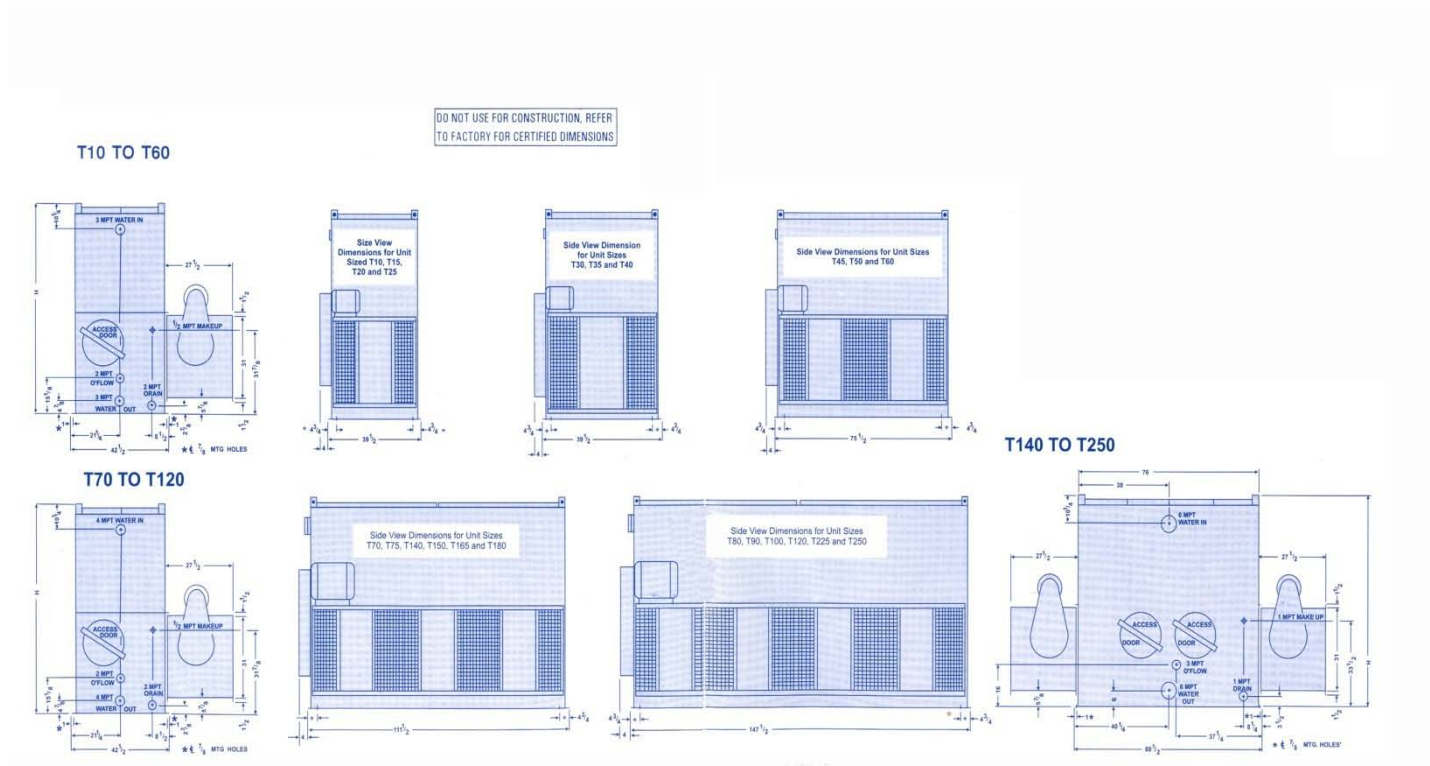


DIMENSIONS 10-250

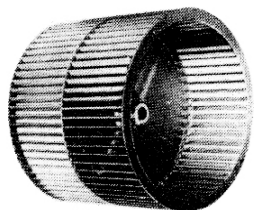
MODEL NO.	H	MODEL NO.	H	MODEL NO.	H
T10	78 $\frac{3}{4}$	T50	78 $\frac{3}{4}$	T140	78 $\frac{3}{4}$
T15	78 $\frac{3}{4}$	T60	94 $\frac{1}{2}$	T150	78 $\frac{3}{4}$
T20	78 $\frac{3}{4}$	T70	78 $\frac{3}{4}$	T165	94 $\frac{1}{2}$
T25	78 $\frac{3}{4}$	T75	78 $\frac{3}{4}$	T180	94 $\frac{1}{2}$
T30	78 $\frac{3}{4}$	T80	78 $\frac{3}{4}$	T200	94 $\frac{1}{2}$
T35	78 $\frac{3}{4}$	T90	78 $\frac{3}{4}$	T225	94 $\frac{1}{2}$
T40	94 $\frac{1}{2}$	T100	78 $\frac{3}{4}$	T250	94 $\frac{1}{2}$
T45	78 $\frac{3}{4}$	T120	94 $\frac{1}{2}$		

NOTE: when the cooling tower is installed with a remote sump, the tower should be specified with an oversized bottom drain. The float valve and strainer normally furnished with the unit are omitted in this case.

DO NOT USE FOR CONSTRUCTION. REFER TO FACTORY FOR CERTIFIED DIMENSIONS



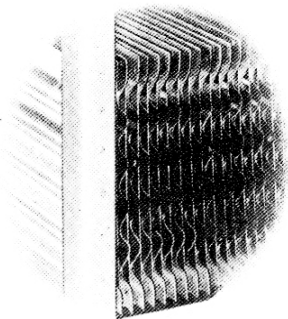
**200
TO
350**
**MODEL
THC
CENTRIFUGAL
BLOW THRU**



DIMENSIONS - MODEL THC

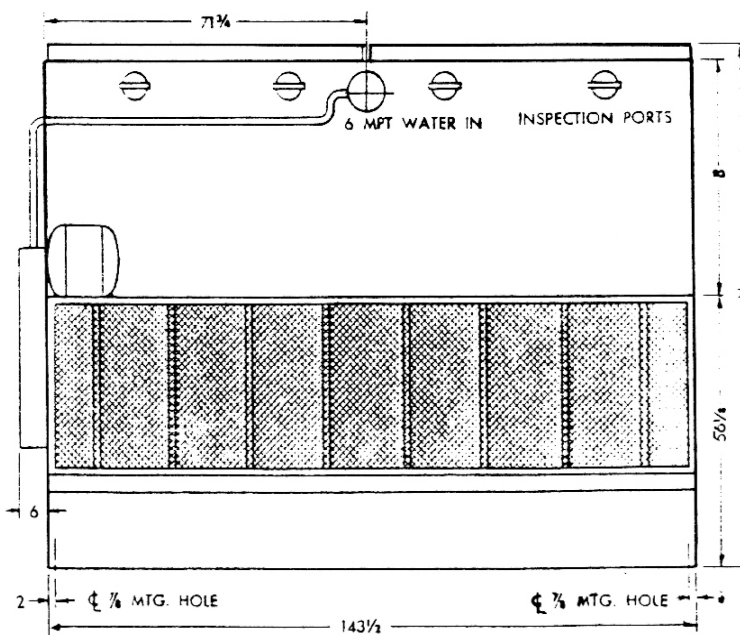
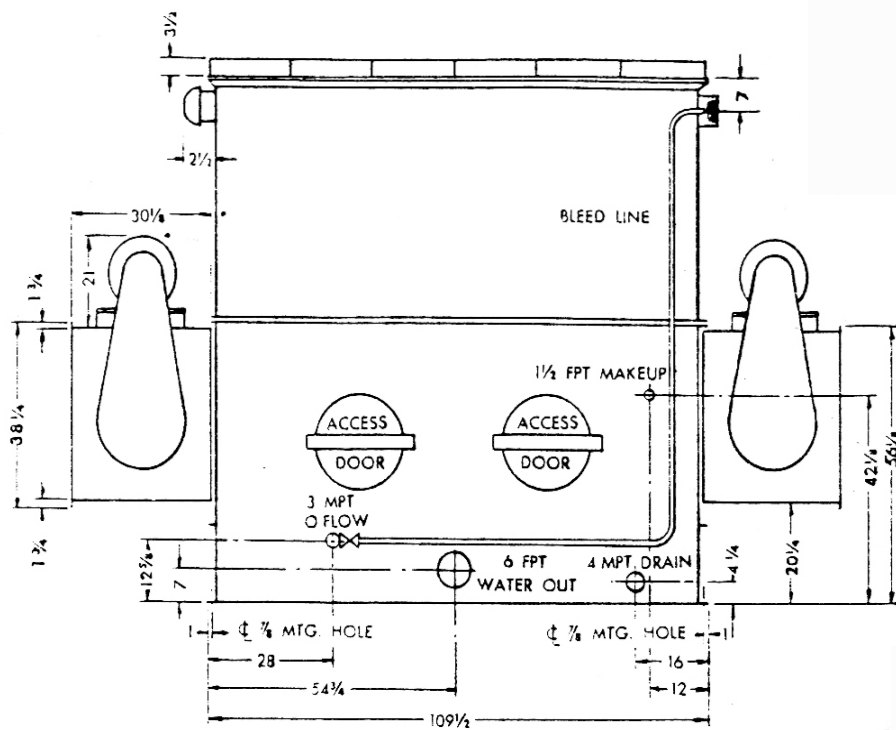
UNIT NO.	B	H
200	39 ⁵ / ₈	99 ¹ / ₄
250	39 ⁵ / ₈	99 ¹ / ₄
330	47 ⁵ / ₈	107 ¹ / ₄
350	64 ¹ / ₄	123 ¹ / ₈

All dimensions are in inches



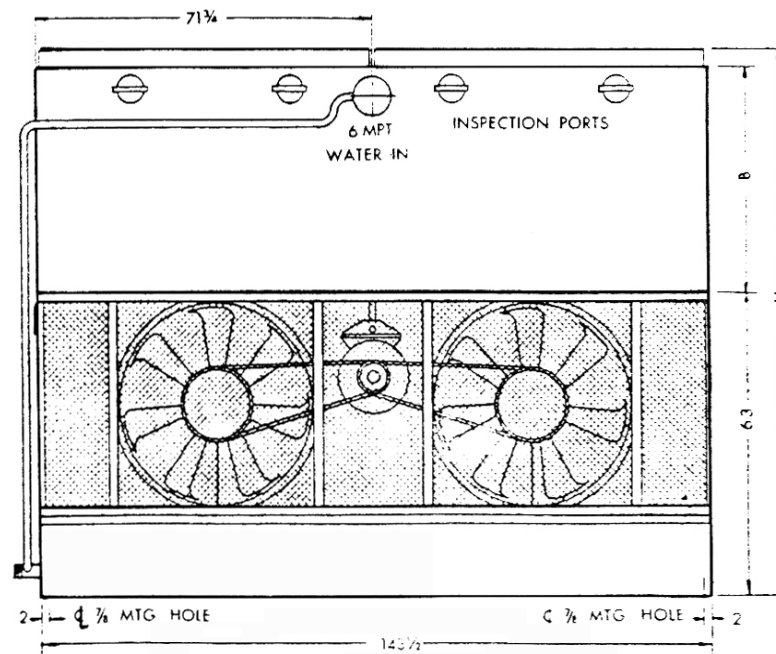
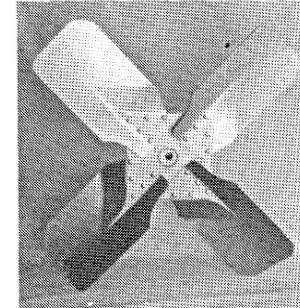
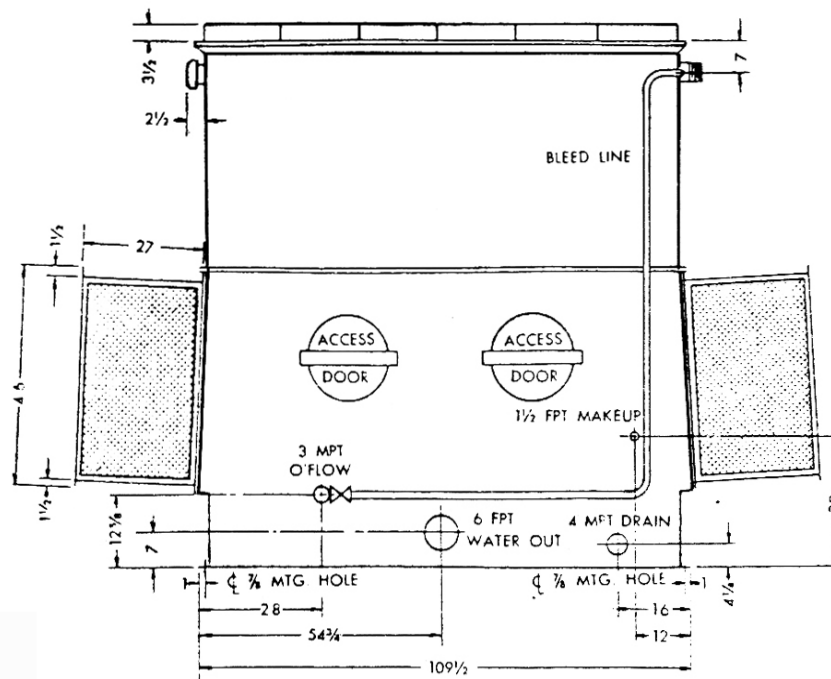
WET DECK SURFACE

The wet-deck surface is special wave-formed galvanized steel sheets designed to give maximum contact between the water and air.



**200
TO
350**

**MODEL
T H P
PROPELLER
BLOW THRU**

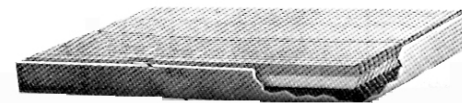


DIMENSIONS - MODEL THP

UNIT NO.	B	H
200	39 ⁵ / ₈	106 ¹ / ₈
250	39 ⁵ / ₈	106 ¹ / ₈
330	47 ⁵ / ₈	114 ¹ / ₈
350	64 ¹ / ₄	130 ³ / ₄

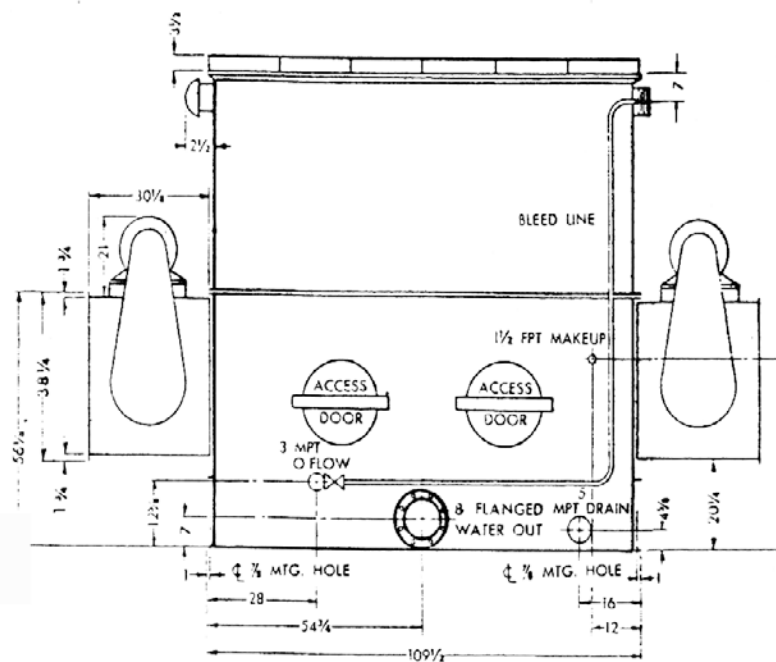
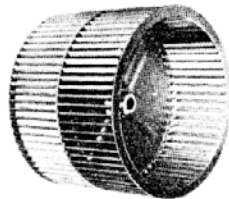
All dimensions are in inches.

ELIMINATORS Moisture eliminators are made of galvanized steel and have three breaks with a hooked leaving edge. They are spaced on 1" centers, assuring no water carryover.



METAL GAUGES PAN: 3/16 BOTTOM 1/4" SIDES CASING: 1/8"
SPRAY PRESSURE 5 PSIG REQUIRED AT INLET HEADER ON ALL UNITS

**400
TO
800**
**MODEL
THC
CENTRIFUGAL
BLOW THRU**



DIMENSIONS - MODEL THC

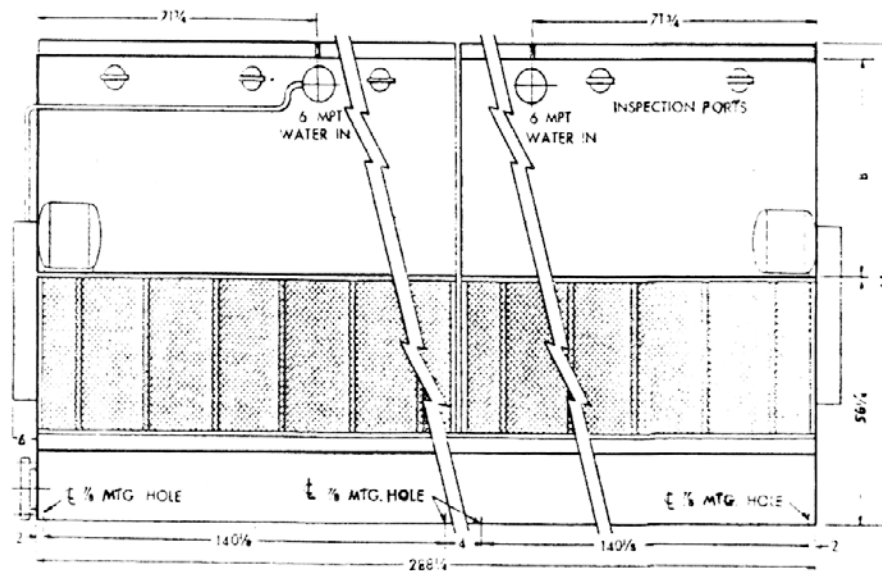
UNIT NO.	B	H
400	39 5/8	99 1/4
500	39 5/8	99 1/4
600	47 5/8	107 1/4
700	64 1/4	123 7/8
800	79 3/8	139

All dimensions are in inches.

FAN SECTION

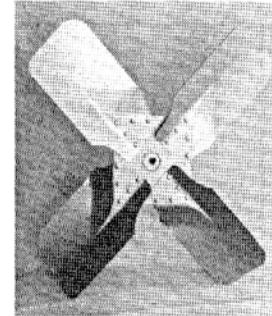
Forwardly-curved centrifugal fans are used for quiet operation.

The bearings are selfaligning sleeve-type. On all units, the fan section is flanged for inlet ductwork.



**400
TO
800**

**MODEL
THP
PROPELLER
BLOW THRU**



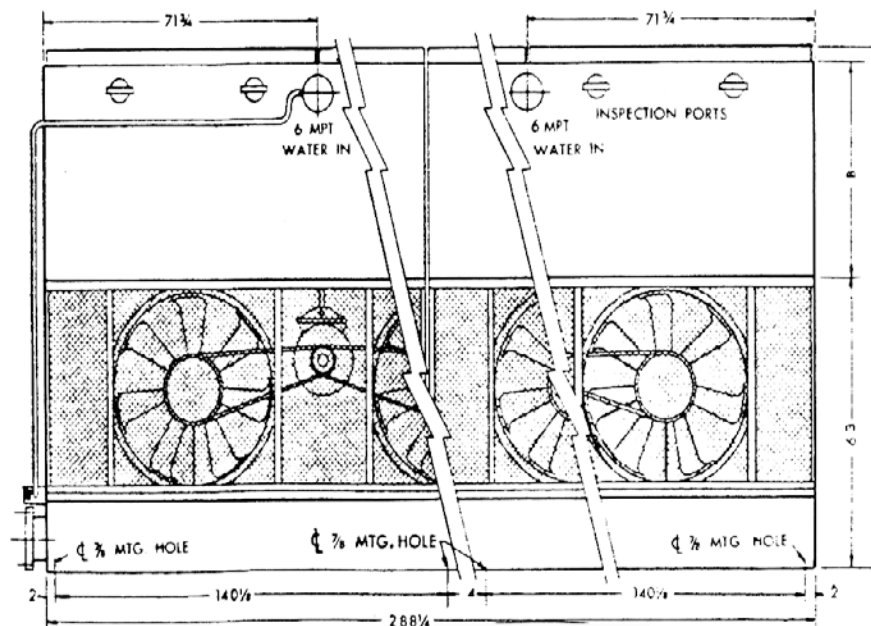
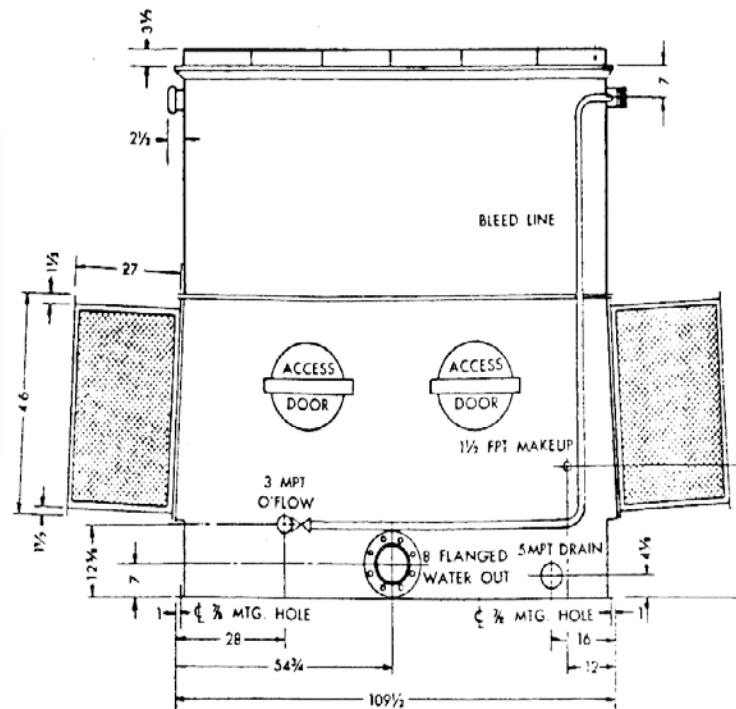
DIMENSIONS - MODEL THP

UNIT NO.	B	H
400	39 ⁵ / ₈	106 ¹ / ₈
500	39 ⁵ / ₈	106 ¹ / ₈
600	47 ⁵ / ₈	114 ¹ / ₈
700	64 ¹ / ₄	130 ³ / ₄
800	79 ³ / ₈	145 ⁷ / ₈

All dimensions are in inches.

FANS

A highly efficient propeller fan system is used for minimum horsepower requirements. Cast from a light-weight galvanized alloy, the propeller fans are statically and dynamically balanced and operate in the dry air on the entering air side of the unit. The fans are installed in close-fitting cowls with discharge vanes which provide maximum fan efficiency.



METAL GAUGES PAN: 3/16 BOTTOM 1/4" SIDES CASING: 1/8"
SPRAY PRESSURE 5 PSIG REQUIRED AT INLET HEADER ON ALL UNITS